

WRIGHT

IN WISCONSIN

VOLUME 17 | ISSUE 2

MAY 2012

NEWSLETTER OF FRANK LLOYD WRIGHT® WISCONSIN

Wright & Like 2012: Spring Green Hidden Treasures

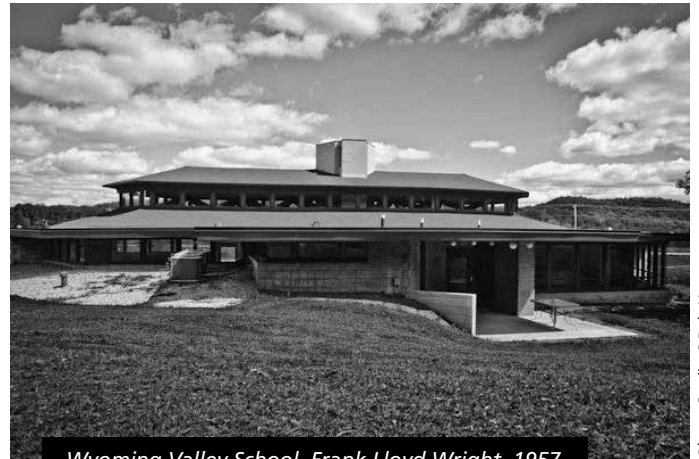
For the first time in over a decade, Frank Lloyd Wright® Wisconsin returns to Wright's beloved Wisconsin River valley and the community of Spring Green for its annual Wright & Like™ tour on Saturday, June 9 from 9 am-5 pm.

The tour will feature eight private homes and seven public sites designed by Frank Lloyd Wright, apprentices Herb Fritz, Wes Peters, Charles Montooth, James Pfefferkorn and Marcus Weston, plus John Steinmann and contemporary architect Ken Dahlin. Only one of the homes has ever been open to the public. Tour headquarters will be the Wyoming Valley School, the only elementary school ever built from a Wright design. This is truly a rare opportunity to experience the work of the master architect and his students in the idyllic Wisconsin countryside that was Wright's inspiration.

Please note that Taliesin is not a site on the Saturday tour. For those wishing to visit Taliesin, please make separate arrangements to take one of their many tours by contacting the Frank Lloyd Wright Visitor's Center at 877.588.7900 or taliesinpreservation.org. We strongly advise Wright & Like tour participants to allow the entire day for this tour and book their Taliesin tour for either Friday or Sunday.

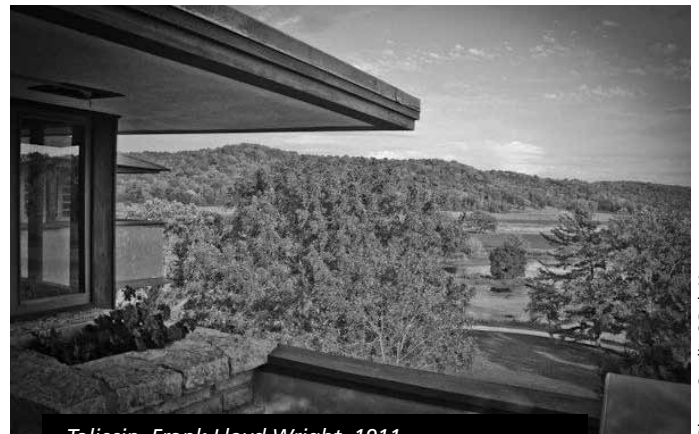
Friday Night Event

An Evening at Taliesin on Friday, June 8 from 5-8:30 pm is a rare opportunity to celebrate Frank Lloyd Wright's birthday at his world-renowned home. The evening begins with music in the theater, just as it did in Wright's day. Guests will then be transported to Wright's private residence to enjoy wine, a wide array of appetizers and further musical entertainment while freely exploring the famed house, gardens and grounds of Taliesin. A silent auction will take place in Wright's drafting studio.



Wyoming Valley School, Frank Lloyd Wright, 1957

Photo Credit: ©Bob Hartmann



Taliesin, Frank Lloyd Wright, 1911

Photo Credit: ©Bob Hartmann

Please see Wright & Like, page 6

In This Issue

- 3 Fall Tour
- 4 Burnham Beat
- 6 Wright & Like
- 8 Sean Malone
- 9 At Taliesin

Save the Date
Wright & Like 2012
Spring Green, June 9

From the President

It's May, and that means our annual Wright & Like™ tour is just a few weeks away. This year's tour, "Hidden Treasures," will draw you to Spring Green, where Wisconsin native Frank Lloyd Wright built his world-famous home and studio, Taliesin, and trained many of the architects whose work you will experience on our tour.



Robert Hartmann

The weekend begins with our annual Friday evening special event on June 8, Mr. Wright's birth date, at Taliesin and the Hillside Theater. Attendance is limited, so make your plans now if you haven't already done so. Our Saturday, June 9 tour will include Wright's Wyoming Valley School, which will serve as tour headquarters, eight private residences, and four public sites in and around the Spring Green area.

If you're unable to attend our Friday evening event at Taliesin, we recommend that you book your own tour(s) of Taliesin either on Friday afternoon or Sunday. Also, if you are planning to spend the weekend in the area, you may want to visit another Wright site, the Seth Peterson Cottage, on Mirror Lake. It will be celebrating the 20th anniversary of its restoration on Sunday afternoon, with a free open house between 1-4 pm.

Make it a memorable weekend. Enjoy the sites, meet new people, and discover the "Hidden Treasures" on this year's Wright & Like™ tour. (See the feature article on Wright & Like™ for full details.)

A Volunteer Among Volunteers – George Hall

Wright & Like™ would not be possible without the many hours of work that our dedicated volunteers contribute. It is often difficult and unwise to acknowledge one person's contributions to an effort that involves the participation of many. But this year's Wright & Like™ tour has a backstory that makes it easy to identify that individual. His name is George Hall.

It has been my good fortune to meet and get to know George over the past few years. When our Board decided to bring the Wright & Like™ tour to Spring Green, George volunteered to work on the planning committee. And did he ever work! George worked with Board member Karen Bergenthal and others to locate the sites for the tour. First, there were three houses, then five. But that wasn't good enough. George continued to look for those hidden treasures. When we reached eight houses, we had to tell him to stop. I know that George has found even more wonderful houses by Wright apprentices, but they will have to wait until the next time the tour returns to Spring Green. It is because of George's dedication and diligence that we are able to present such a fine lineup of sites for this year's

tour. On behalf of Frank Lloyd Wright® Wisconsin, I thank George Hall for all the countless hours he has dedicated to making this year's Wright & Like™ tour a success. He is truly a volunteer among volunteers.

The Power of Volunteers

Frank Lloyd Wright® Wisconsin is an all-volunteer organization, with the exception of a part-time office manager, who many of you may know only as Sherri. It is Sherri Shokler who has cultivated some of our most dedicated volunteers including George Hall, and I know she will work enthusiastically to get more people like George involved in our organization. We owe our success to the core of volunteers who make good things happen year after year. We rely on our Board, members and other volunteers who share a common passion to see our organization succeed.

In order to continue our work, we need more dedicated, resourceful volunteers like George Hall. Sometimes we find them. Sometimes they find us. If you share our passion, please step forward and help us. We need docents for the Wright & Like™ tour and the Burnham Street House Museum. If you're interested, please contact Sherri Shokler at 608.287.0339, sshokler@wrightinwisconsin.org.

Robert Hartmann, President, Frank Lloyd Wright® Wisconsin ☒



Published three times annually in February, May and September

WRIGHT IN WISCONSIN is published by Frank Lloyd Wright® Wisconsin, a non-profit organization designed to promote, protect and preserve the heritage of Frank Lloyd Wright, his vision and his architecture in his native state of Wisconsin. Membership benefits include discounts at the Monona Terrace Gift Shop and on Wright & Like Tour tickets, this newsletter, volunteer opportunities and more. To join our organization visit wrightinwisconsin.org or contact us at the address and phone number listed below.

Editor: Barbara Sanford

Designer: Richard Wunsch

Chair, Publications Committee: Mark Hertzberg

Thanks to architect/author Randy Henning for contributing the "At Taliesin" column.

Board of Directors (Site Representatives): Robert Hartmann - President, Lois Berg (Wingspread) - Vice President, Denise Hice - Secretary, Megan Schultz - Treasurer, Greg Anderegg (SC Johnson), Karen Bergenthal, Bruce Bosben, V. Terry Boyd, Curtis Carter, Ken Dahlin, Michael Ditmer (Bernard Schwartz House), Barbara Elsner, Gail Fox, Timothy Frautschi, Tom Garver (Unitarian Meeting House), Mark Hertzberg, Carol Johnson (Taliesin®), Mike Lilek, Stewart Macaulay, Bill Martinelli (Seth Peterson Cottage), Margo Melli, Donna Newgord, Maria Pandazi, Heather Sabin (Monona Terrace Community & Convention Center), Ron Scherubel, and Mary Wasielewski.

Registered trademarks are used with permission from the Frank Lloyd Wright Foundation, Scottsdale, AZ.

Frank Lloyd Wright® Wisconsin

PO Box 6339, Madison, WI 53716-0339

Tel 608.287.0339, Fax 608.287.0764, wrightinwisconsin.org

Thread of Influence: Fall Tour to Spotlight Houses by Frank Lloyd Wright, Russell Barr Williamson & John Bloodgood Schuster

by Gail Fox

On Saturday, September 8, Frank Lloyd Wright® Wisconsin will offer a full-day bus tour, leaving from Madison and Milwaukee, to visit five houses designed by three prominent architects. Several of these private homes have never been open to the public. The tour ends with a party/reception in a fabulous Wright house. All five houses exemplify modern, organic design, though they were built more than 40 years ago, between 1939 and 1970. All feature natural materials, open planning, a beautiful site, a close connection to nature, and sensitivity to scale and texture.

These shared characteristics are not fortuitous. They represent a continuous thread of influence from the master of organic architecture, Frank Lloyd Wright, whose trailblazing vision of residential design was transmitted to Russell Barr Williamson, who worked for Wright in the mid-teens, and John Bloodgood Schuster, who for a time worked as a draftsman for Williamson. Both architects left the Milwaukee area to live on Lake Michigan near Oostburg. Schuster maintained a close connection to Williamson for over 20 years. When Williamson died in 1964, it was Schuster who was entrusted to carry Williamson's unfinished commission to completion.

The houses on the tour are located in Sheboygan and Manitowoc Counties. At present, the itinerary includes Williamson's personal home, built on the shores of Lake Michigan near Oostburg; a nearby home on Lake Michigan

designed by Schuster; a contemporary home by Schuster on a scenic bluff in Manitowoc; and a wood and stone Schuster home on the picturesque East Twin River in Two Rivers. The tour ends at Frank Lloyd Wright's masterful *Life* magazine house commissioned by Two Rivers businessman Bernard Schwartz in 1939. The brick and cypress Usonian home will be the setting for a late afternoon party with music, food, tours and conversation.

Space on the fall tour is limited. The full tour itinerary will be announced to members in June, and tickets will go on sale July 1 on a first-come, first-served basis. Watch for your invitation and circle the July 1 ticket sale date on your calendar. ☒



Russell Barr Williamson House, 1950

Photo Credit: Loren Western

20 Years Living Wright: Celebration of Seth Peterson Cottage Restoration

by Bill Martinelli

The Seth Peterson Cottage on Mirror Lake will celebrate the 20th anniversary of its restoration on Sunday, June 10 from 1-4 pm. The fun begins with a free open house, guided tours, music and cake, with a special program at 2:30 pm. There will be a drawing for a free night's stay at the cottage.

Designed by Frank Lloyd Wright, the cottage was the first Wright building available for vacation rental. In the past 20 years, it has welcomed more than 12,000 overnight guests, coming from most U.S. states and many foreign countries. The most distant visitor was from Perth, Australia. Monthly open houses on the second Sunday each month attract more than a thousand visitors a year. The cottage continues to draw attention, with feature articles in *The New York Times*, *National Geographic Traveler*, *Architectural Digest* and *Chicago Tribune*.



Photo Credit: ©Don Sanford

Seth Peterson was a Wisconsin native with a lifelong interest in Wright. In 1958, he convinced the 90-year-old master architect to design the cottage, but Peterson suffered an untimely death before it was finished. The cottage was then bought and completed by others. In 1966, the Wisconsin Department of Natural Resources acquired the property when the land

was added to Mirror Lake State Park. It sat boarded up and abandoned until 1989, when concerned Mirror Lake residents and Wright devotees formed a nonprofit organization, the Seth Peterson Cottage Conservancy, to save and restore the cottage as Wright envisioned it, and to give it a new and useful life. The award-winning three-year, \$300,000 rehabilitation project was completed in 1992. ☒

For more information, visit the website at sethpeterson.org.

by Terry Boyd

Inside the Model B1 House

As followers of the Burnham Street project know, the formidable restoration of the Model B1 house is complete and is now open for visitors. Photographs are available on the website at wrightinmilwaukee.org. Attention has now turned to the completion of interior furnishings. A walk through the amazingly compact interior is an experience of sequential revelations. The modest spaces simultaneously reveal unexpected expansiveness; the functional efficiency of the room arrangement becomes clear; and built-in furnishings extend floor space and provide substantial storage. Closer observation reveals meticulously designed trim throughout and walls that glow with subtle layers of color. The interior seems complete, needing no more, not feeling empty. However, the American System-Built Home project was intended as modest housing for real people, and Wright designed furnishings to carry out daily life in the ASBH houses.

The next step is to provide the furnishings Wright envisioned for the houses. Some of the extensive documentation of the ASBH project (approximately 900 drawings) was intended specifically to help potential buyers understand how Wright's vision could be materialized through furnishings, as they were not included as part of the purchase. The existence of such detailed drawings led us to decide that this is an unusual opportunity to be able to create an interior with furnishings as Wright imagined it, without the filter of a client's personal needs and wishes. Although this house had residents over the years, they did not make structural changes to the interior, nor was any original furniture constructed. Now that the structure is restored to its original state, and because it will no longer have residents and will remain open to the public, we have the opportunity to build the furnishings and obtain the objects Wright proposed.

In order not to impose our personal interpretations about what to include, we developed a set of design guidelines to help us adhere as closely as possible to what Wright intended, based on original drawings and physical evidence within the house. When neither exists, and a current need for operation of the house is evident, the guidelines give direction on how to proceed. For example, documentation gives no information on interior lighting beyond a single-bulb wall fixture in each room. With only a low-wattage bulb common in the 1916-17 period, the rooms are marginally usable at night. We need table or floor lamps. The design guidelines lead to research of lamps for other ASBH houses built at the time, and if no designs are found, the next step is to turn to other Wright houses built at, or slightly before, the date of construction of the B1 house.



Photo Credit: ©Bob Hartman

With design guidelines for furnishings defined, we set about accumulating as much documentation of ASBH interiors as possible. This required my doing research at the Frank Lloyd Wright Foundation Archives at Taliesin West in Scottsdale. The purpose was to locate the original ASBH drawings related to the interior of the several house models proposed within the project, and drawings for interiors and furnishings for houses built around the same time as the ASBH project. Several members of the Interiors Committee traveled to Glencoe, Illinois to visit extant ASBH houses, particularly the Sherman Booth House, where the interior has been carefully maintained and some furnishings remain.

The resulting collection of information from different sources has made it possible to build Wright's intention for the interior. The research revealed that even in this modest project, the furnishings and decorative objects he proposed followed his organic architecture concepts. The designs of the interiors and furnishings of the B1 Model house are not diluted in concept.

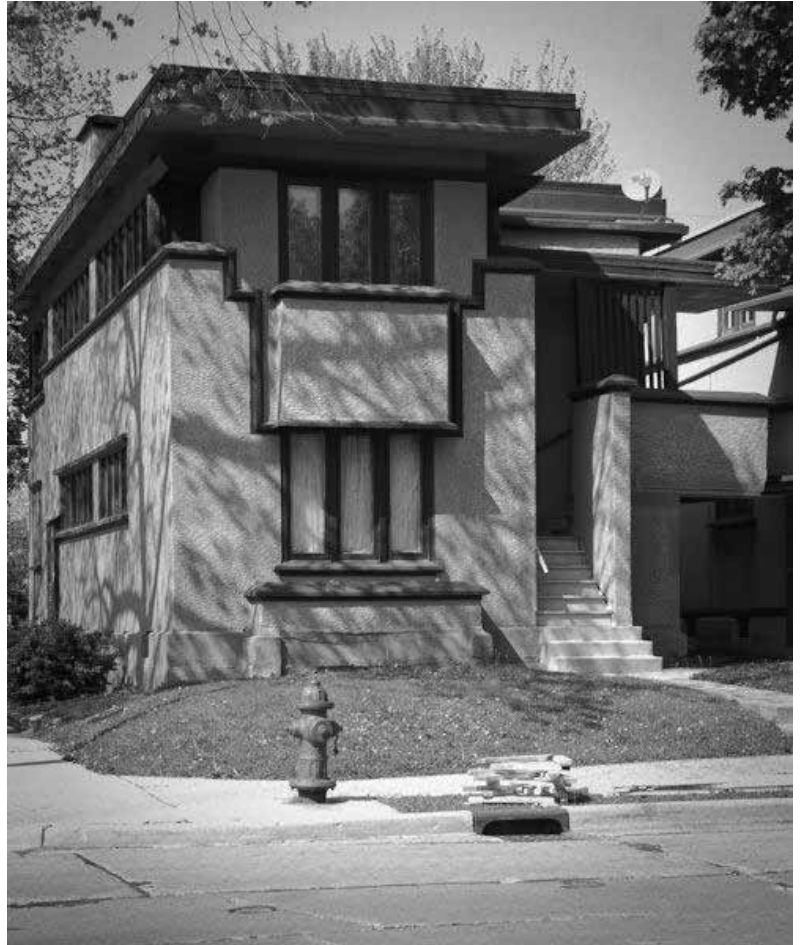
With our "dream list" of furnishings now in hand, we plan to commission individual furniture pieces and locate the more ephemeral objects included in the drawings, as funding becomes available. The photo shows the first piece, the multifunction dining table/library table/desk that is part of the built-in wall of shelves and cabinets. This efficient complex of functions within one unit is included in several of the ASBH house models. The chairs are temporary reproductions. With this initial success, we are optimistic that the remaining pieces will follow. ☞

Help Make a Beautiful Neighbor to Model B1

by Jack Holzhuetter

Who doesn't like Burnham? So far, it seems, no one. Of the thousands of visitors who have toured the restored Model B1 at 2714 West Burnham in Milwaukee, not a one has complained, according to Barbara Elsner. She is one of the founders of Frank Lloyd Wright® Wisconsin, the sparkplug behind the Burnham restorations, and a docent who has conducted innumerable tours of the property. Preservationists, anonymous neighbors, and visitors from around America and more than a dozen foreign nations have all been delighted and amazed by this beautiful little house. And many have expressed gratitude that our small volunteer organization has accomplished this miracle on Burnham.

Our organization is delighted and amazed, too. The initial plunge into the restoration pool was scary for a small nonprofit, but soon the miracles behind the miracle began and fears subsided. Most important for building confidence was a Save America's Treasures grant from the U.S. Department of the Interior. Frank Lloyd Wright® Wisconsin was a first-time applicant for a coveted SAT grant. Yet out of hundreds of organizations that applied nationally, ours was one of 40-some recipients. Then came the challenge of matching the \$150,000 grant dollar for dollar. Milwaukee foundations and individuals came through—none with a sum larger than \$50,000. Model B1 was restored, inside and out.



In 2010, the SAT program awarded us a second astonishing grant, this one for nearly \$400,000 to restore the exterior of the Wright-designed duplex on the corner at 2732 West Burnham, another of the six American System-Built structures in the 2700 block. Fundraising to meet that dollar-for-dollar match has been more difficult. But we are within \$15,000, again thanks principally to grants from Milwaukee-area foundations, and this time also from Racine, Madison and Eau Claire foundations.

We have never before asked our members to donate directly to our Burnham project. Now we are. We need your tax-deductible gift to help restore 2732 to the no-complaints state of Model B1.

The immediate need is for the \$15,000 to meet the Save America's Treasures challenge

The immediate need is for the \$15,000 to meet the Save America's Treasures challenge to restore 2732's exterior and correct some structural and mechanical problems. We also face a \$200,000 challenge to restore its interior. At 2714, the interior had survived. At 2732, it has

not. We have targeted one of the two units as a museum; it needs costly appropriate furniture, lighting fixtures and other furnishings.

So we turn to you. Gifts of any size are welcome. Please be sure to indicate in the memo line of your check that you wish to support the "Burnham Project." Of course, we also welcome donations for general support of Frank Lloyd Wright® Wisconsin to keep the office lights burning. But the urgent need is the \$15,000 Save America's Treasures match. Please help make the 2732 duplex a beautiful neighbor to the single-family Model B1 at 2714. Send your contribution to Frank Lloyd Wright® Wisconsin, PO Box 6339, Madison, WI 53716-0339. ☒

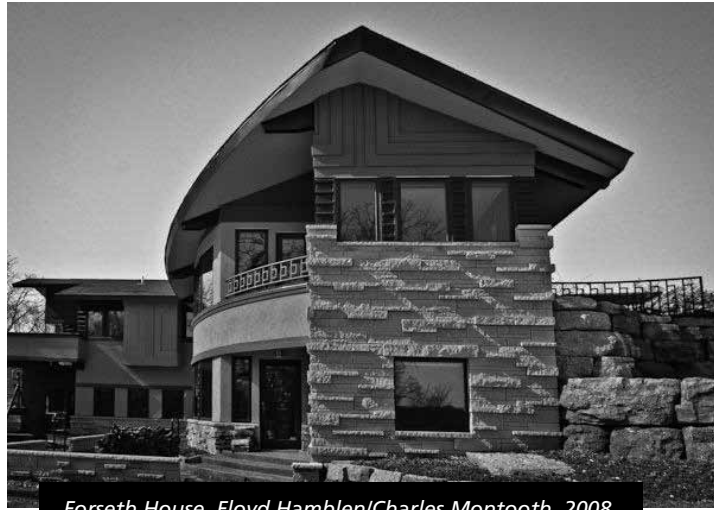
Ticket Sales

Tickets for members for the Saturday tour are \$45 in advance and \$50 on the day of the tour; tickets for nonmembers are \$50 in advance and \$55 on the day of the tour. Tickets for the Friday night event are extremely limited and are \$125 for members and \$150 for nonmembers. To purchase tickets, call 608.287.0339 or order online at wrightinwisconsin.org. ☒



M&I Bank, Wes Peters, 1970

Photo Credit: ©Bob Hartmann



Forseth House, Floyd Hamblen/Charles Montooth, 2008

Photo Credit: ©Bob Hartmann



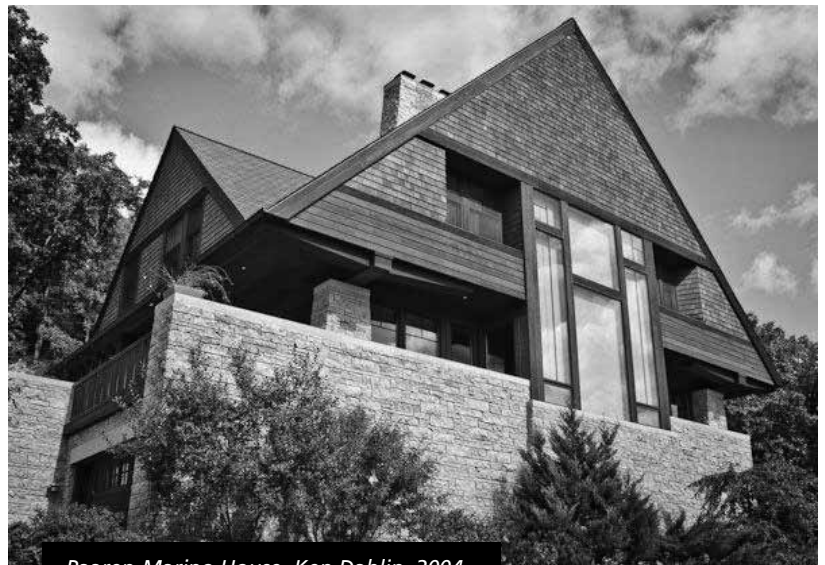
South Hill, Marcus Weston, 1967

Photo Credit: ©Bob Hartmann



Helen Boley House, James Pfefferkorn, 1980

Photo Credit: ©Bob Hartmann



Paaren-Marino House, Ken Dahlin, 2004

Photo Credit: ©Bob Hartmann

Photo Credit: ©Bob Hartmann



Medical Building, Wes Peters, 1961



Kinney-Mancinie House, Herb Fritz, 1990

Photo Credit: ©Bob Hartmann

Photo Credit: ©Bob Hartmann



Donald Beger House, John Steinmann, 1947-48



The Pinery, James Pfefferkorn, 1998

Photo Credit: ©Bob Hartmann

Photo Credit: ©Bob Hartmann



Spring Green Community Library, Charles Montooth, 1993



Johnson House, Herb Fritz, 1984

Photo Credit: ©Bob Hartmann

Sean Malone New Head of FLLW Foundation

by Mark Hertzberg

The black Toyota Prius quietly rolls to a stop. Sean Malone, 42, steps out, a white straw hat on his head, an iPhone in his hand. Meet the new president and CEO of the Frank Lloyd Wright Foundation.

Malone, who comes from Ten Chimneys Foundation in Genesee Depot, Wisconsin, breaks the mold of what many people may have expected in the new head of the Foundation.

Architect? No. Professor of architecture or art history? No. Seen many Wright buildings before taking the position? No. Steeped in years of Frank Lloyd Wright? No. Lives at or near Taliesin? No. Lives at or near Taliesin West? No.

Bright? Yes. Affable? Yes. Thoughtful? Yes. Articulate? Yes. Successful record with Ten Chimneys? Yes. Enthusiastic about his new job? Yes. Confident that he is the right person to help the Foundation overcome its challenges and negative publicity? Yes.

It is clear why Taliesin West would want Malone. He has a stellar record as director of a nonprofit organization. On the other hand, one might wonder why someone with no traditional background in the world of Wright would want to step into what has been somewhat of a revolving door there.

Malone talks about his interest in Wright: "I have always been moved by his body of work. Because I am not an architect, I was not in a position where I could explain what it was that moved me. I found it invigorating. It's just beautiful, balanced, intentional work, and so I started from a point of engagement with his art. The other piece that really excited me and brought me into the organization was the potential for the body of work and the philosophy of Frank Lloyd Wright to inspire me."

There is much more substance to his vision about his new role than what some may fancy for him. His responsibilities are more than overseeing the preservation of Taliesin and Taliesin West, overseeing the Foundation's architecture school, and raking in big bucks in donations, grants and souvenir sales to fund the whole kit and caboodle.

Malone says that the Foundation's "biggest challenge" is "to decide what the next decade or two will be about." That is not a particularly startling answer. What is more interesting is the next series of questions he poses, and the way he answers those questions.

First, he asks, "Who do we exist to serve? That is a loaded question. It underlines my opinion that we exist to serve...it is something I believe all nonprofits should do. That is what attracted me to the Foundation.



Photo Credit: ©Mark Hertzberg

"Who do we serve directly? People who visit the two national landmarks we own, our publications...but also the people we exist to serve through indirect means. If we are inspiring people who are professionals, who are part of the built environment, more than just architecture, our ability to inspire them is not just about them. It is about what they then go and do.

"I am a real believer in both direct and indirect impact. Directly, I want to inspire architects and student architects, all people involved with the built environment (including writers, photographers and city planners). All of them, if we inspire them, change people's lives. If you take a look at the direct and indirect impact (of the Foundation on people), it's global.

Then Malone asks, "What are the deep, meaningful needs of those individuals and communities? Once we define who we exist to serve, what are their needs? Sometimes it is things they don't know they want yet. It is about needs, not wants. It has to be (something) unmet. If someone is doing it adequately, I don't want to do it."

Finally, Malone says he wants to know, "Which of those needs do we agree we are uniquely positioned to meet, better than anyone in the world or that no one in the world can do at all?"

Asking those questions, having "conversations" with people, is key to Malone's approach to his new position. "That is the lens through which I look at the role of a nonprofit. I don't think that articulation is completely new or earth-shattering."

Please see Malone, page 10



This column, written by apprentice MaryBud Lautner and published in the Wisconsin State Journal newspaper on July 29, 1934, addresses the newly established Taliesin Fellowship at Taliesin, Frank Lloyd Wright's home near Spring Green, in rather general terms. Along with her neighbor and fiancé John Lautner, Mary "MaryBud" Faustina Lautner came to the Fellowship from Marquette, Michigan in October 1933 as Mary Roberts, a daughter of future Wright client Abby Beecher Roberts. John Lautner and MaryBud Roberts were married on January 1, 1934. Randolph C. Henning

Every weekend when Taliesin holds open house for visitors from all over the country, we are asked the same questions, generally about things that seem too close or too obvious to us to mention in explaining our work. We take it for granted that everybody knows the plan and purpose of the Fellowship, from reading our prospectus and the articles we have written, but evidently the idea is too different and too new for most people to grasp easily.

In the first place, the Taliesin Fellowship is not a school. We have no classes, no regular lecture periods, no official teachers. Each apprentice learns through his own efforts and those who come expecting to be taught gain nothing by being here. Anyone learns best by experience, so we acquire knowledge and dexterity by work itself. The actual construction of the new fellowship buildings helps the architect more than any number of academic years spent before a drafting board. The planning and building of furniture enable him to see the whole as a harmonious unit, exterior and interior. The painting, wood carving, music playing, weaving, all are done with no other instruction than the criticism of the fellows. Thus each individual is free to express his own ideas in whatever medium he chooses.

Having no definite course of an academic nature, the length of each apprentice's stay here is determined by himself. At the end of three years, if his work has been satisfactory to himself and to Mr. Wright, he receives a personal certificate, worth more to us than the degree of any college in existence.

The number of apprentices average about thirty, and the group never becomes static. No special previous training is necessary; in fact, the less contact with school books the better. There is no age limit, as the ages vary from eight to thirty. Girls are also admitted - or you wouldn't be reading this article. There are seven at present, and we do practically the same work as the boys with a little more attention to the household arts.

Last Sunday a well-meaning gentleman from Madison made a statement that calls for correction. He said, "I suppose when you leave here that it's easy to get work - if you happen to get clients that like Mr. Wright's style of architecture." In the first place it isn't easy for any architect to make a living, considering the number of people content with cheap houses. Secondly, Mr. Wright has no "style" of architecture, his houses are not "typed," like the anonymous mixture of imitations seen in America - colonial, Gothic, English, Norman, or just plain suburban. His houses are adapted to the needs and finances of his client and built to blend with the particular qualities of the surrounding country. No "boxes" indiscriminately scattered about, no "style" for any kind of setting. Those of you who have seen the beauties of Taliesin, become a part of the hill on which it stands, will understand. Third, Mr. Wright is not producing architects in his own image. He is master, and each apprentice absorbs his principles to adapt them for individual use. ☒

MARY LAUTNER

We need you! Please renew your Frank Lloyd Wright® Wisconsin membership for 2012!

Thank you to those of you who have already renewed your FLLW®WI membership for the 2012 calendar year. For those on our email list, you've already received a renewal reminder. Your tax-deductible membership will support our ongoing efforts to promote, protect and preserve Frank Lloyd Wright's legacy. Your membership entitles you to our triennial newsletter, a 15% discount at the Monona Terrace Gift Shop, discounted tickets to the annual Wright & Like house tour, members-only tour opportunities, and other benefits enhancing your interest in Wright.

Prefer to save the stamp? Call Sherri at 608.287.0339 or renew online at wrightinwisconsin.org.

While most nonprofits might end up with a list of only two or three challenges that answer those questions, Malone has no illusion that there will not be many “opportunities” that the Foundation could take on. He has no doubt that there could be a daunting list of goals that some may offer as priorities. He wants to pare such a list down. “What is particularly exciting for the Frank Lloyd Wright Foundation...that is a big part of why I wanted to make this move and a big part of why I am so energized about the work that we are going to accomplish in the coming years.”

Malone asks more questions. “Why do you think of his body of work and philosophies? Why do you think it is going to be relevant ten years from now? Why do you think it is going to be relevant a hundred years from now? Those are the questions I am asking people.”

He has a degree in business from the University of Wisconsin, but Malone sees his work as being more than just a dollars-and-cents guy charged with keeping the troubled Foundation solvent. “The idea of how we live our lives has been an important part of my career because I think it matters. I think people find it relevant, and that we as humans have the opportunity to make that a decision...I think Wright’s work has something very meaningful to say about our ability to choose the life we are going to live, to live an intentionally lived life, and that is a powerful thing. That is one of the handful of truly universal challenges...the sense that we don’t have to choose between being a great one thing or another. We don’t have to choose between deep relationships with family and friends and connections with the nature around us. You can live an integrated life.”

Malone believes that one must do more than just read the plethora of biographies of Frank Lloyd Wright to understand him. One has to experience his work. “To get a sense of the universal truths, you don’t read a biography of Shakespeare, you read Shakespeare, and that is what draws me to the body of work of Frank Lloyd Wright. That is his legacy.”

It is surprising to some that Malone continues to live in Wauwatosa, a suburb of Milwaukee, rather than move to Scottsdale or even to Spring Green. “I think that it is reflective of an organization that is no longer Arizona-centric.” He has full confidence in the people who oversee Taliesin and Taliesin West, without feeling the need to be on site full-time.

“My job is to make sure that both are able to be successful in their day-to-day operations, both in public programs, like the tours, and in education, like the school of architecture, but the mission of the organization is, at the very least, national, so I think it makes sense that the CEO isn’t the on-site person at either place. We have very talented staff members. We didn’t need another COO in Scottsdale.”

He spends a bit more than half his time traveling. He anticipates that he will be traveling less frequently to Taliesin West as time goes on, instead traveling more across the country to raise money for the Foundation. “Great things cost money; part of my job is to connect people with those activities. It’s the donors who make it really happen. It’s my job to steward that investment. It’s my job to make sure their donation is well spent and makes an impact.”

Malone finishes the interview with a reminder of who he believes the Foundation must not lose sight of. “We exist to serve, and only succeed because of the public.” Some people will certainly deem Sean Malone’s tenure a success if he retains his position—he is at least the sixth CEO in a decade. Others will consider his tenure a success if the Foundation’s finances are stabilized. Malone himself has a broader goal. He drives a Prius. It is reasonable to think that he will be satisfied only with results that will be harder to measure: that he is able to bring stability to the Foundation so that Wright’s work can continue to influence people to live Wright’s architecture, to better their lives and their communities. ☒

SC Johnson Gallery Opens

In July 2011, 75 years after H. F. Johnson, Jr. and Frank Lloyd Wright met, SC Johnson announced a long-term loan agreement with the Frank Lloyd Wright Foundation. The agreement marks a new chapter in the Johnson family’s long history with the visionary architect. As part of the agreement, SC Johnson will display a collection of artifacts highlighting Frank Lloyd Wright’s influence on families and the home. The new free gallery, located on SC Johnson’s global headquarters campus in Racine, is titled the SC Johnson Gallery: At Home with Frank Lloyd Wright and opens June 2.



Photo Credit: ©Mark Hertzberg

“We are thrilled to have this collection and open it up for exhibit,” says Fisk Johnson, chairman and CEO of SC Johnson. “We’re so pleased to bring this treasure to Racine and to continue our family’s long legacy with Wright.”

The gallery will feature a collection of Wright’s objects and memorabilia including drawings, models, furniture, fixtures, photos, personal effects and more. The exhibit will be open to the public, free of charge, and will be housed in Fortaleza Hall on SC Johnson’s campus. To make a reservation to visit, call 262.260.2154, or email rondelle@scj.com. ☒

Tours & Events at Wright Sites

Bernard Schwart House

Public Tours

1st Sunday of every other month (June, Aug., etc.)

3 pm

Two Rivers

\$10 Donation; reservations required

Taliesin

Spring Green, WI

Along with their regular tour program, new this season, Taliesin Preservation, Inc. has added four Specialty Tours, each scheduled one Friday per month during the regular tour season.

Landscape Tour (2 hours)

1st Friday of each month
10 am

Cost: \$30 per person

Preservation Tour (2-1/2 hours)

2nd Friday of each month
10 am

Cost: \$57 per person

Exploring Taliesin Tour (2 hours)

3rd Friday of each month
4:30 pm

Cost: \$57 per person

Loving Frank Tour (2 hours)

4th Friday of each month

10 am

\$57 per person

Plus these special events:

Opening Reception

Saturday, May 19

5:30-7:30 pm

Architectural Photography by James Caulfield

Wright4Kids Day!

Saturday, June 2

9 am-noon or 1-4 pm

Activities for ages 5-12

Advance registration required

877.588.7900 ext 226

\$10 per child

American System-Built Homes, Model B1

Open House and Tours

2nd and 4th Saturday of each month

1-4 pm

\$10 Donation at the door

NOTE: No Tours on June 9 due to Wright &

Like tour

Instead, visit us on Sunday, June 10

Seth Peterson Cottage

Open House and Tours

2nd Sunday of each month

1-3:30 pm

Lake Delton

\$4 Donation

Plus these special events:

Mirror Lake State Park Open House

Sunday, June 3

Free guided tours of the cottage

1-3:30 pm

20 Years Living Wright

Celebration of Seth Peterson Restoration

Sunday, June 10

1-4 pm, 2:30 pm Special Program

Free admission, music, cake and more

For a complete listing of all the Wisconsin Wright sites open to the public, including regular tour schedules and contact information, visit our website at wrightinwisconsin.org.

Welcome, New Board Members

Greg Anderegg will be site representative for SC Johnson Company to our Board. He grew up in Racine, where his first job was as a tour guide. Greg's career in community matters with SCJ has allowed him to meet many others in the Wright world. His knowledge and expertise are a valuable contribution to the Board.

Terry Boyd was a professor in the UW-Madison Department of Human Ecology, where she taught classes in the history of design. In addition, she was the faculty director for the school's very large textile collection and was involved with the restoration of the Chancellor's residence. Terry's expertise and contribution to the Interiors Committee for the restoration of our Model B-1 American System-Built Home has been extremely valuable.

Curtis Carter was instrumental in developing the Haggerty Museum of Art at Marquette University. As a scholar, he has done considerable writing on the arts as well as the aesthetics of architecture. Curtis has been involved with numerous boards and particularly enjoys those that work directly with a community.

Ken Dahlin is a practicing architect in Racine. His designs have been featured on many Wright & Like tours. He is also an adjunct professor at the UW-Milwaukee School of Architecture, where he teaches a graduate level seminar on Frank Lloyd Wright.

Donna Newgord spent the past decade as the Wingspread tour coordinator. Recently retired, she sees the great potential of bringing in more tourists and offering them an even broader Wright experience. Donna's involvement in the tours at our Model B-1 American System-Built Home will help push the visitor experience to the next level.

Ron Scherubel is the former executive director of the Frank Lloyd Wright Building Conservancy. He has been a longtime supporter of Frank Lloyd Wright® Wisconsin and has participated in many special events as an attendee, volunteer and advisor. Ron believes strongly in encouraging communication and cooperation between the various "Wright" groups.

Jason Tish has a strong background in cultural resource management and historic preservation. He is currently the executive director of the Madison Trust for Historic Preservation. In this position, Jason undertakes a number of advocacy and educational duties to ensure the preservation of many cultural resources in the Madison area.

Mary Wasielewski spent her professional life as a counselor in the Milwaukee Public Schools. She has served on numerous historic preservation commissions and boards and has volunteered with local groups, including working as a docent for our Model B-1 American System-Built Home. Mary has been particularly impressed with the children who have come through the home and their excitement about it.

Frank Lloyd Wright® Wisconsin
P.O. Box 6339
Madison, WI 53716-0339

PRSRT STD
U.S. POSTAGE
PAID
Wausau, WI
Permit No. 665

Vintage Postcard

The postcard was mailed May 5, 1961. It predates the addition of additional floors to the east side of the Research Tower carport or portico, which began later that year. The Administration Building was designed in 1936 and opened in April 1939. The Tower was designed in 1943-44, built between 1947-50 and closed in 1982. The glass and brick tower is the tallest cantilever construction in the world.

